

# General Advice Only

## Important notice

While this report is based on technical analysis its accuracy and completeness cannot be guaranteed. Novus Capital Limited ("Novus"), its directors and employees do not accept any liability for the results of any actions taken on the basis of information in this report, or any negligent misstatements, error or omissions.

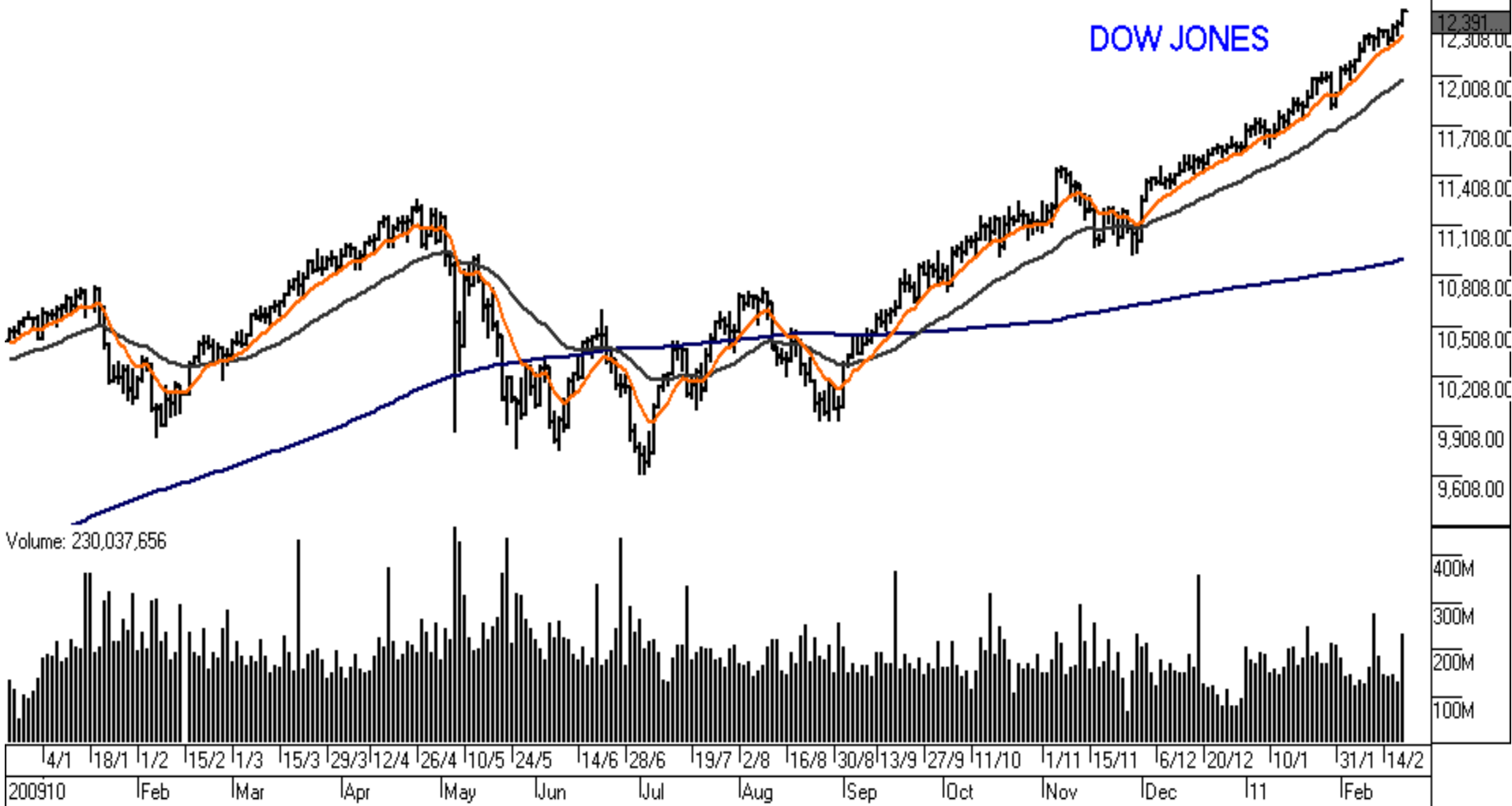
Any financial advice or recommendation contained in this document is general financial product advice and should not be relied on by any person as appropriate to that individual personally. The content of this presentation does not take into account your personal objectives, financial situation or needs and you must determine whether it is appropriate to your situation.

We recommend you obtain financial, legal and taxation advice before making any financial investment decision.

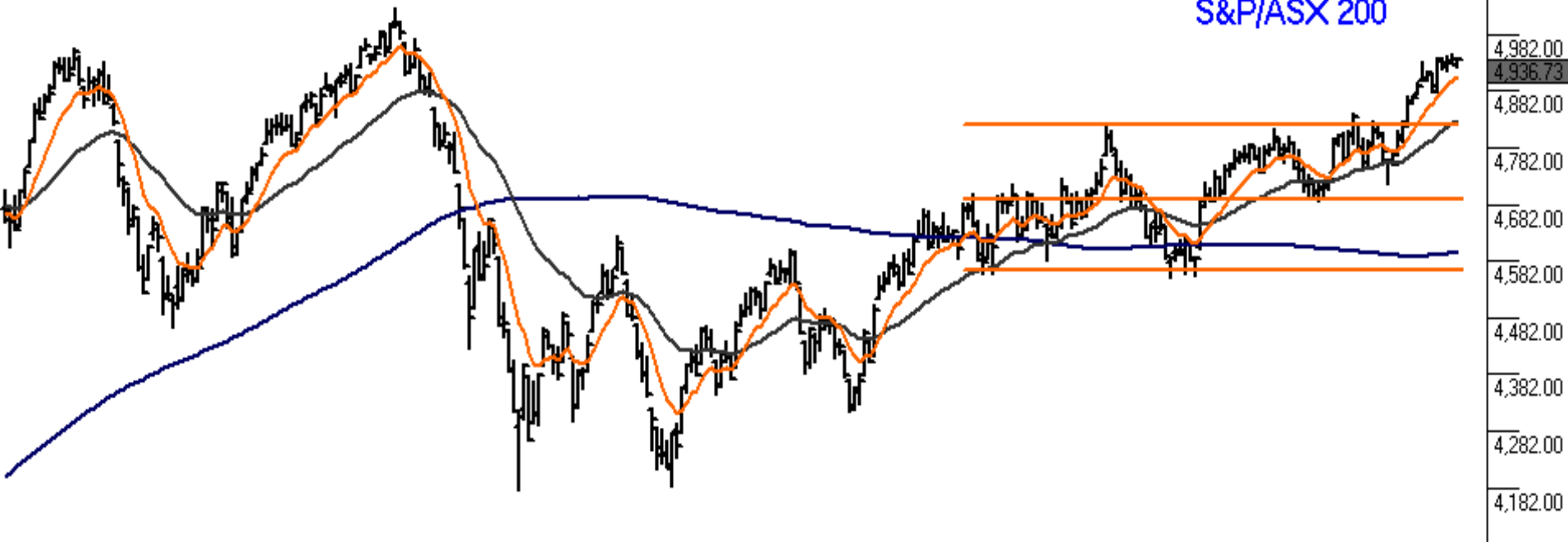
**James Gerrish is a representative of  
Novus Capital Limited ("Novus"), ABN 32 006 711 995  
Australian Financial Services Licence No 238 168**

DJ INDU AVERAGE (.DJI): 12,391.25 +73.11

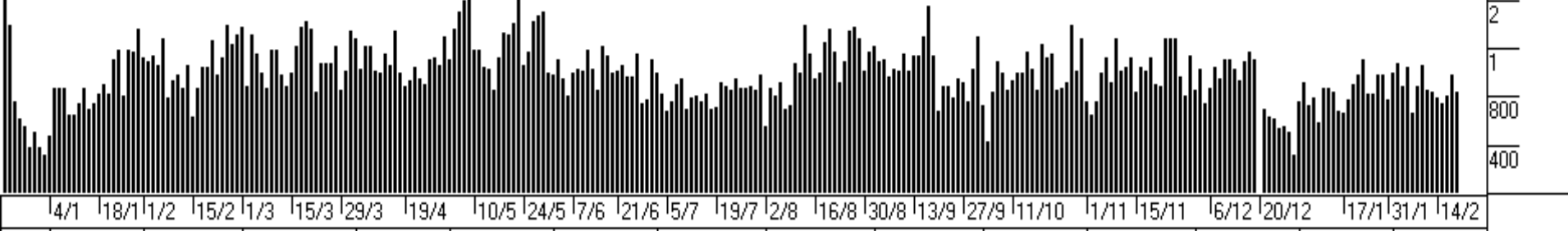
# DOW JONES



# S&P/ASX 200



Volume: 842,466 (in Thousands)

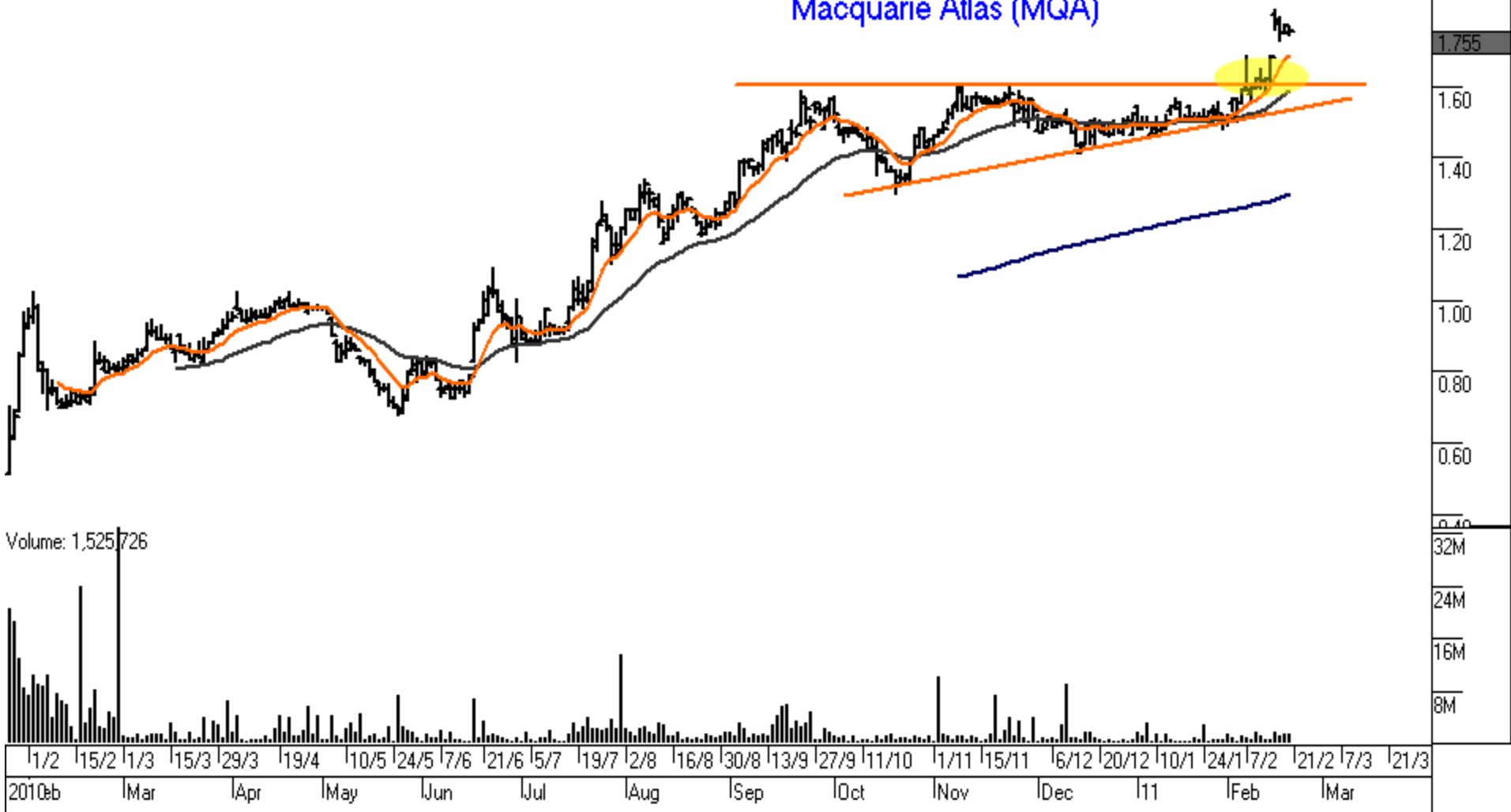


ONESTEEL FPO (OST.AX): 3.01 +0.000



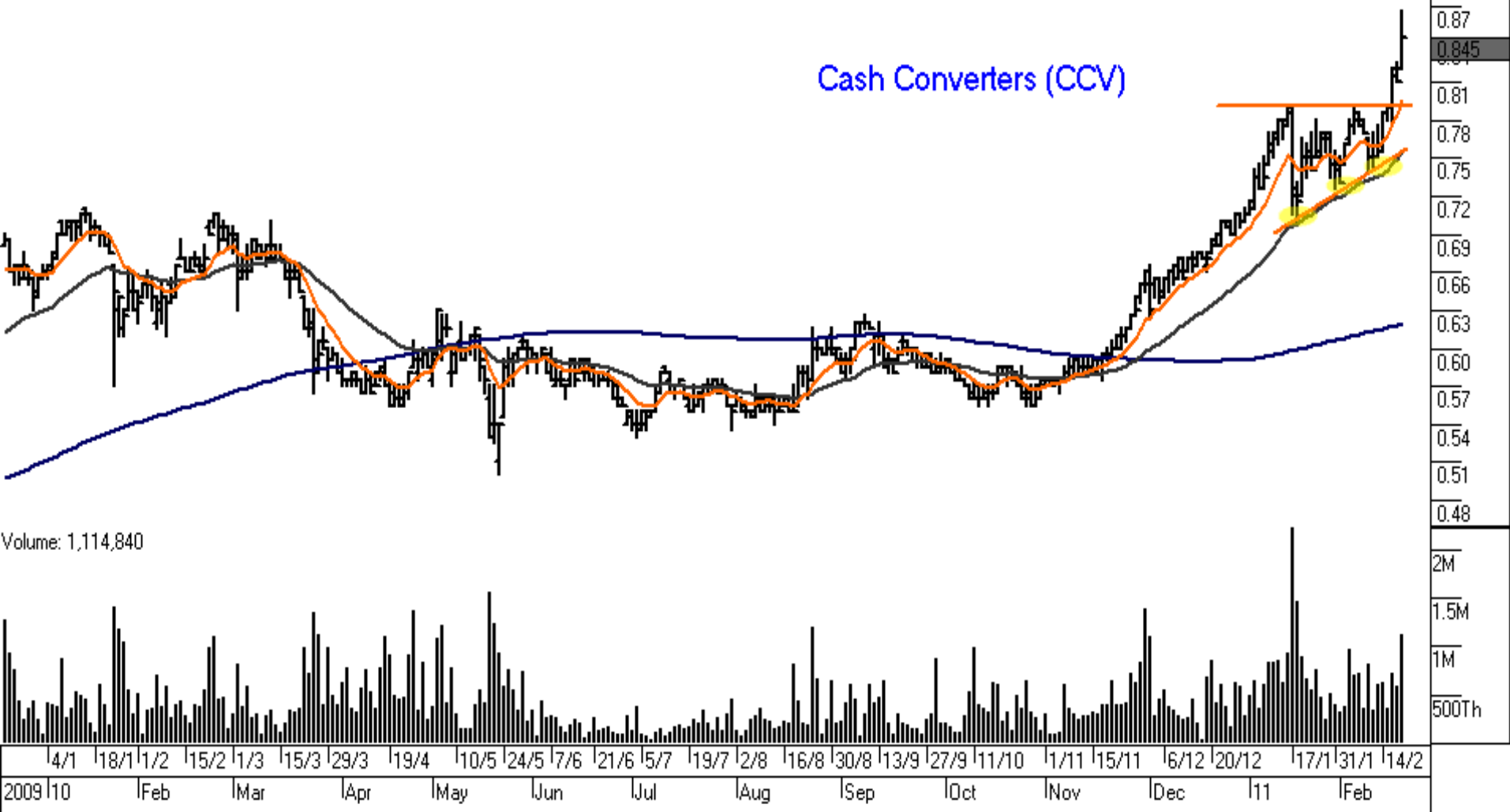
MACQ ATLAS STAPL(MQA.AX): 1.755 +0.000

# Macquarie Atlas (MQA)



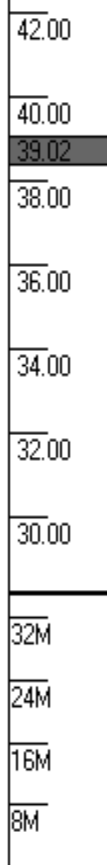
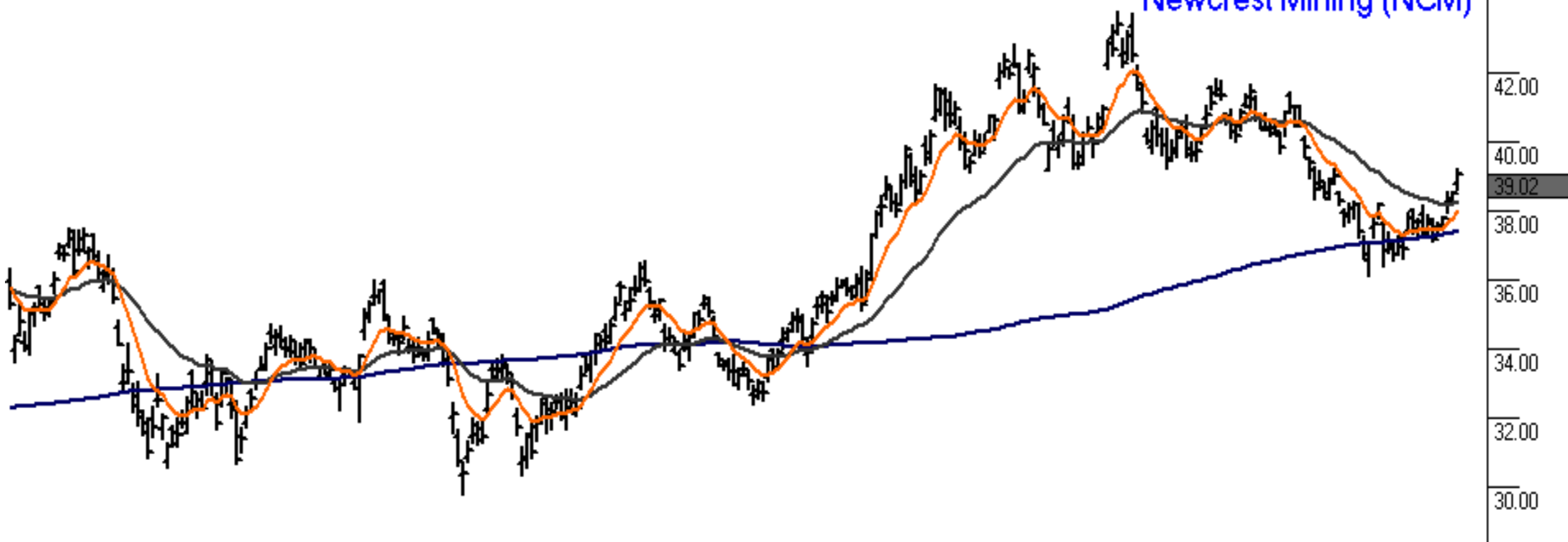
CASH CONV ORD/DI(CCV.AX): 0.845 +0.000

## Cash Converters (CCV)

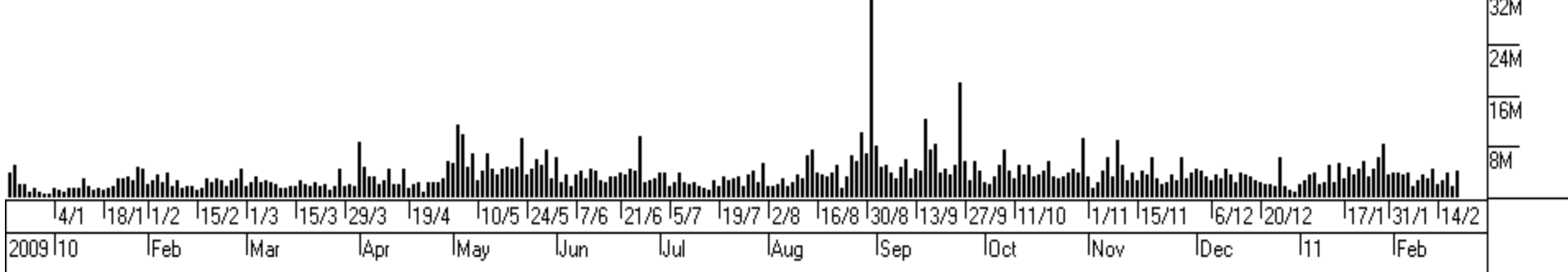


NEWCREST FPO (NCM.AX): 39.02 +0.000

Newcrest Mining (NCM)

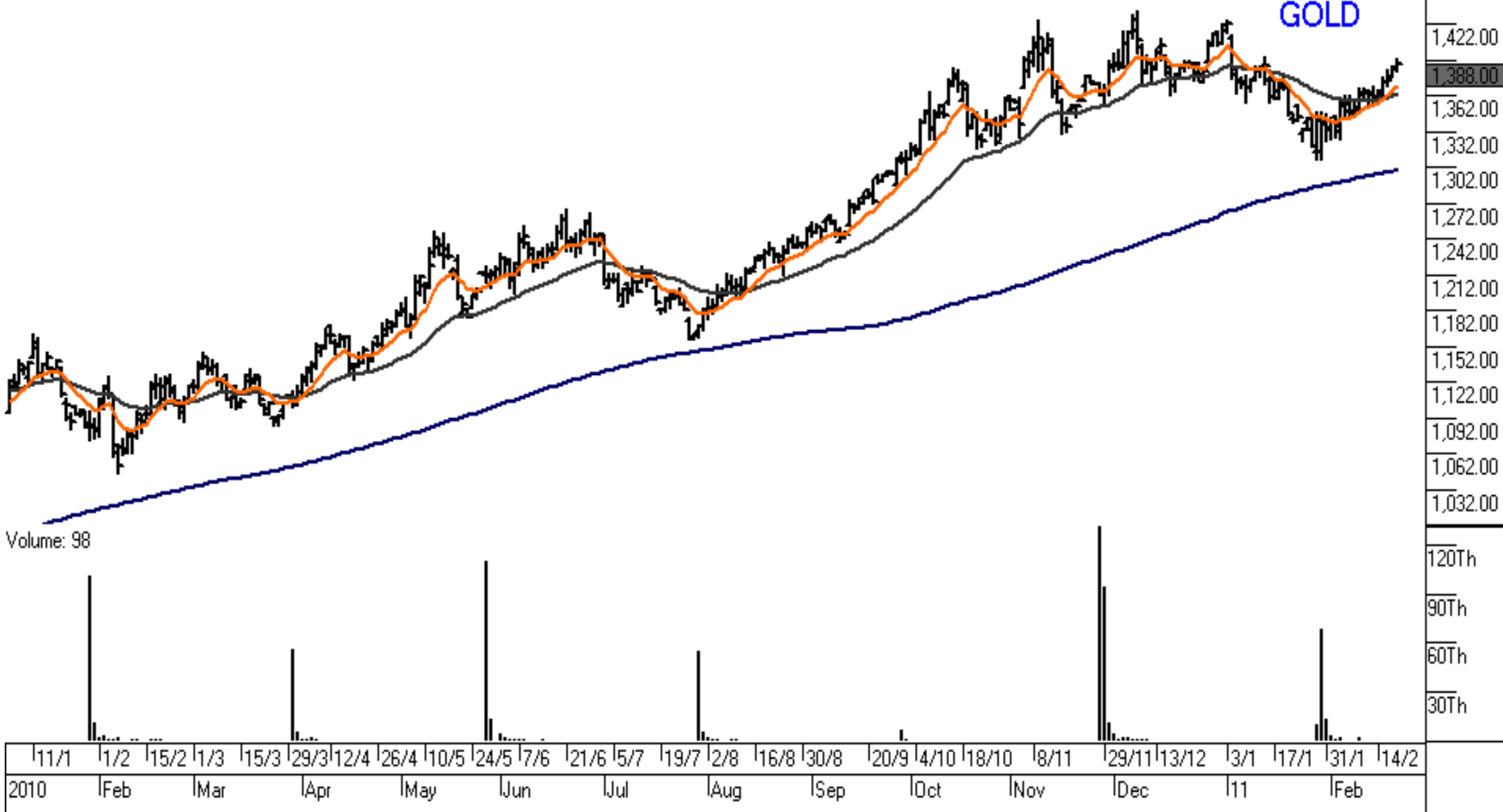


Volume: 4,121,505



100 OZ GOLD FE/d(GCc1): 1,388.00 +3.5

GOLD



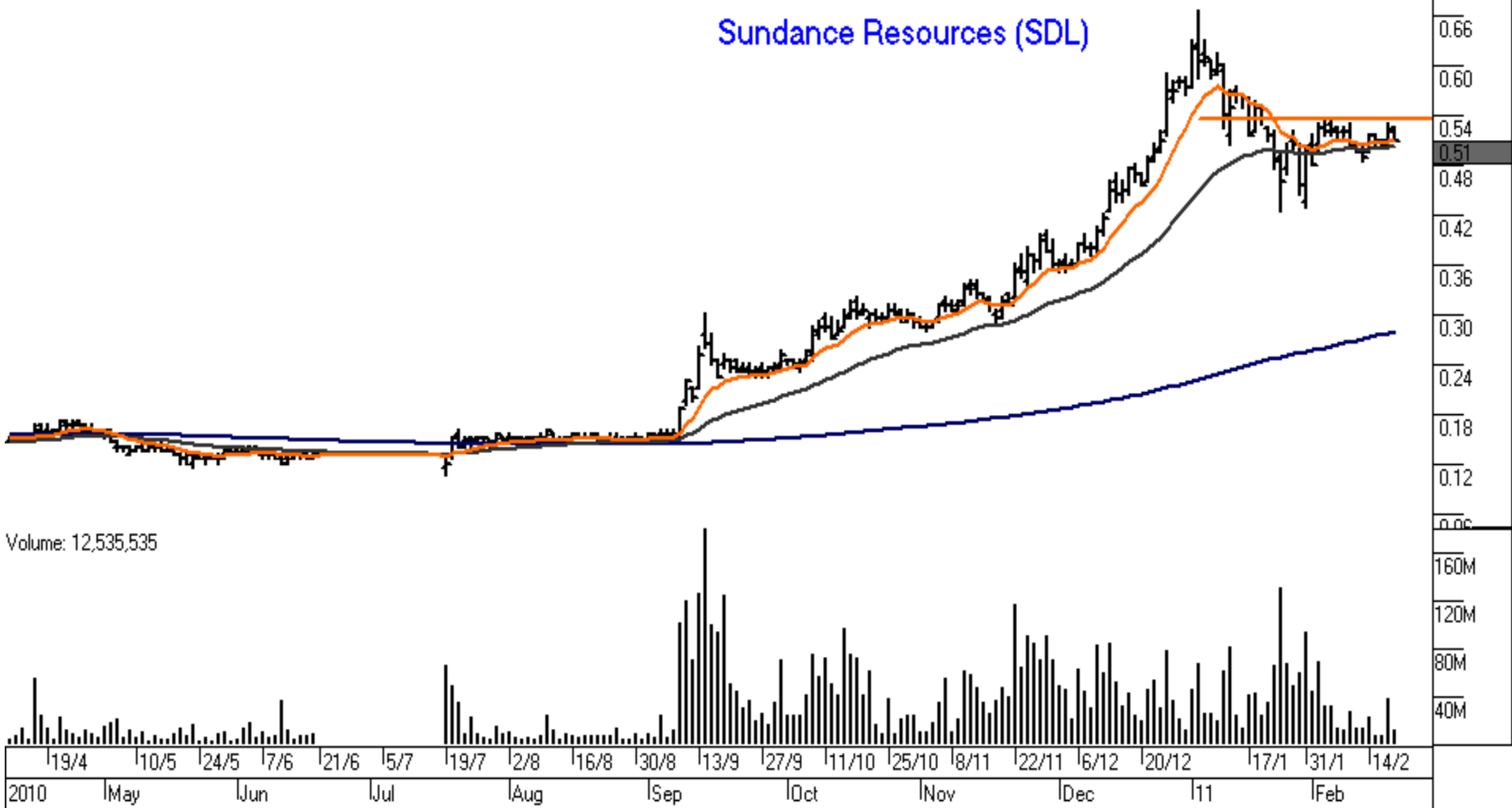
Volume: 98

- 1,422.00
- 1,388.00
- 1,362.00
- 1,332.00
- 1,302.00
- 1,272.00
- 1,242.00
- 1,212.00
- 1,182.00
- 1,152.00
- 1,122.00
- 1,092.00
- 1,062.00
- 1,032.00
- 120Th
- 90Th
- 60Th
- 30Th

11/1 1/2 15/2 1/3 15/3 29/3 12/4 26/4 10/5 24/5 7/6 21/6 5/7 19/7 2/8 16/8 30/8 20/9 4/10 18/10 8/11 29/11 13/12 3/1 17/1 31/1 14/2  
2010 Feb Mar Apr May Jun Jul Aug Sep Oct Nov Dec 11 Feb

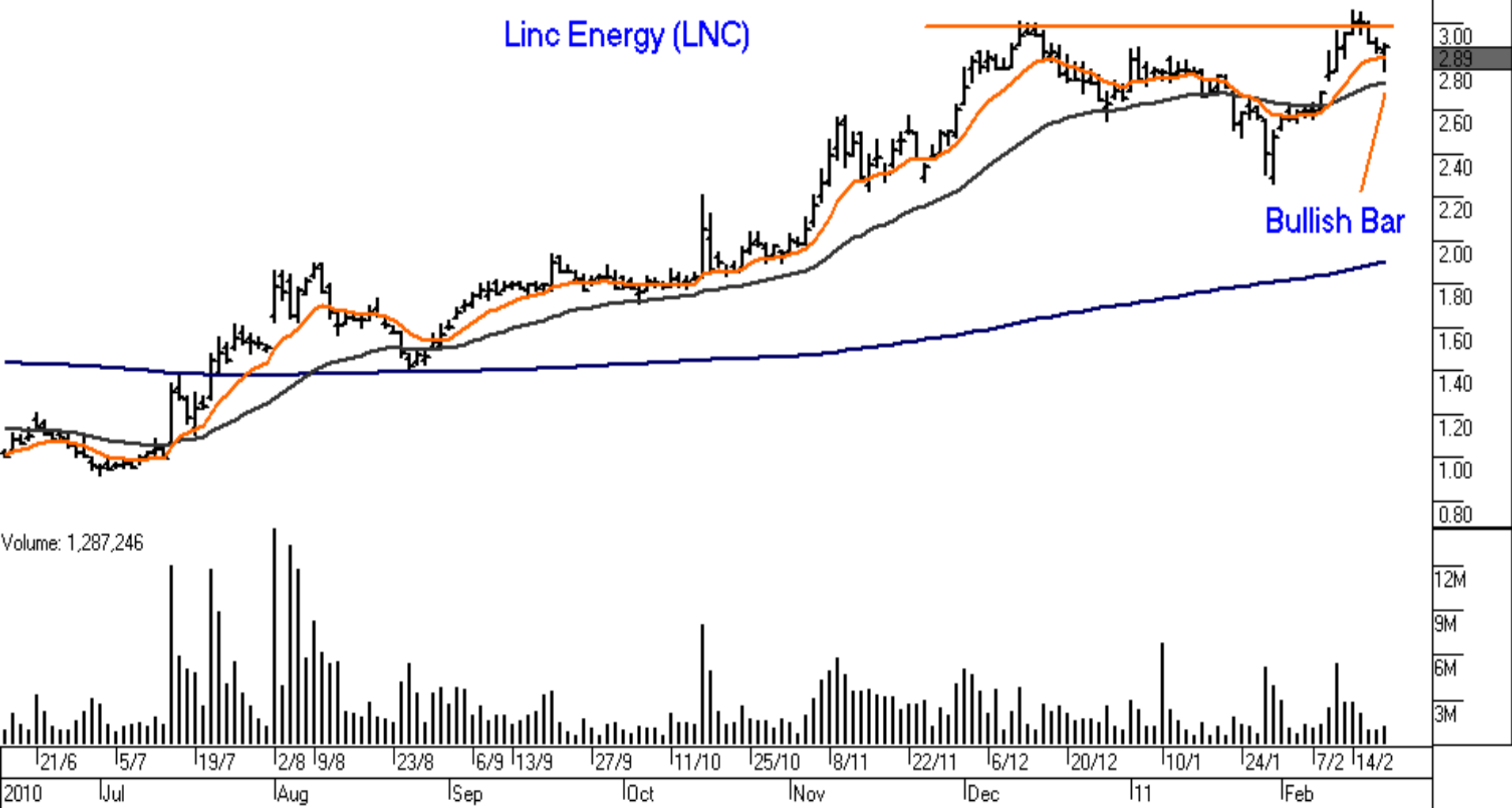


## Sundance Resources (SDL)



LINC ENRGY FPO (LNC.AX): 2.89 +0.000

Linc Energy (LNC)



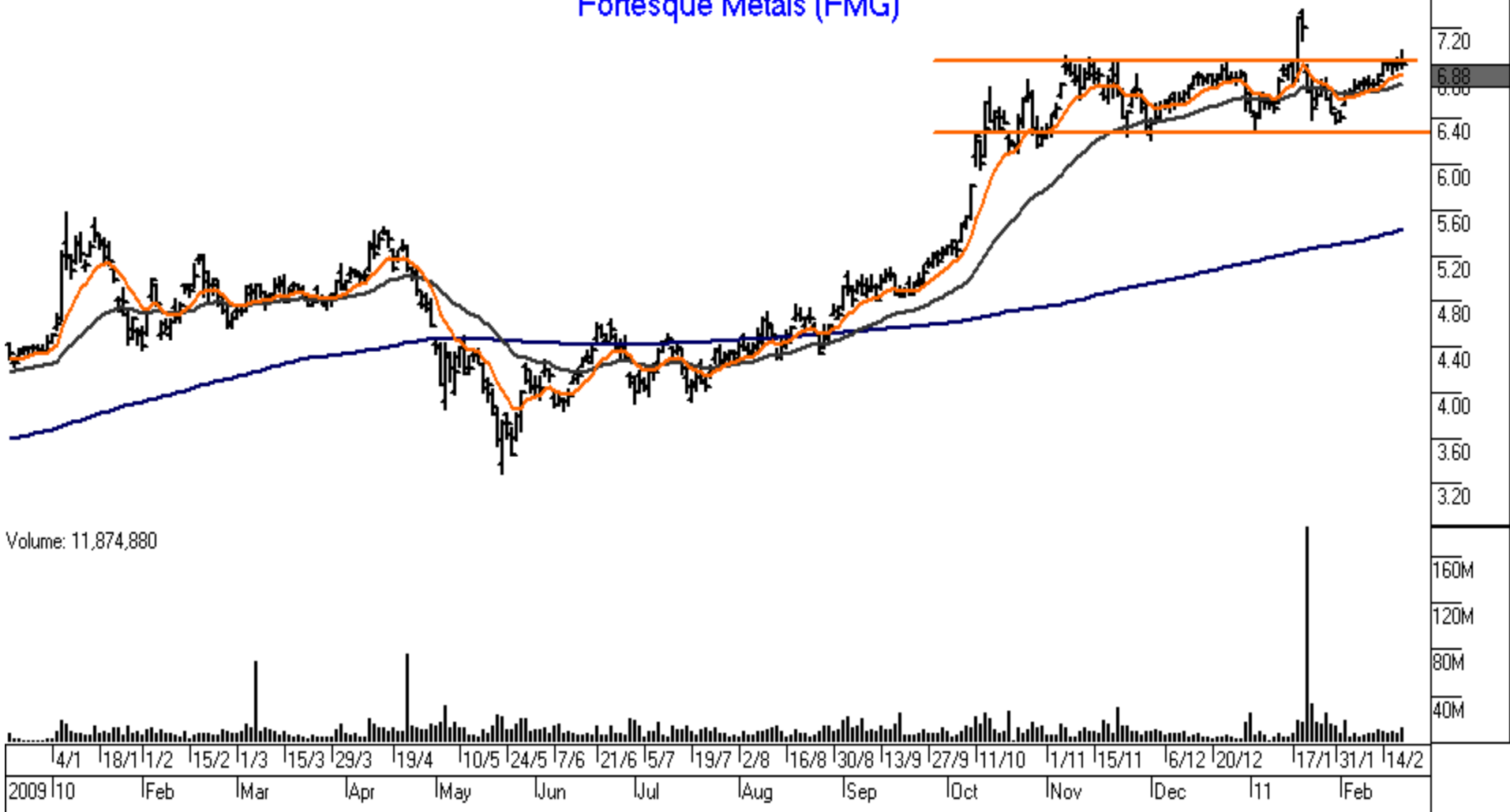
Volume: 1,287,246

3.00  
2.89  
2.80  
2.60  
2.40  
2.20  
2.00  
1.80  
1.60  
1.40  
1.20  
1.00  
0.80  
12M  
9M  
6M  
3M

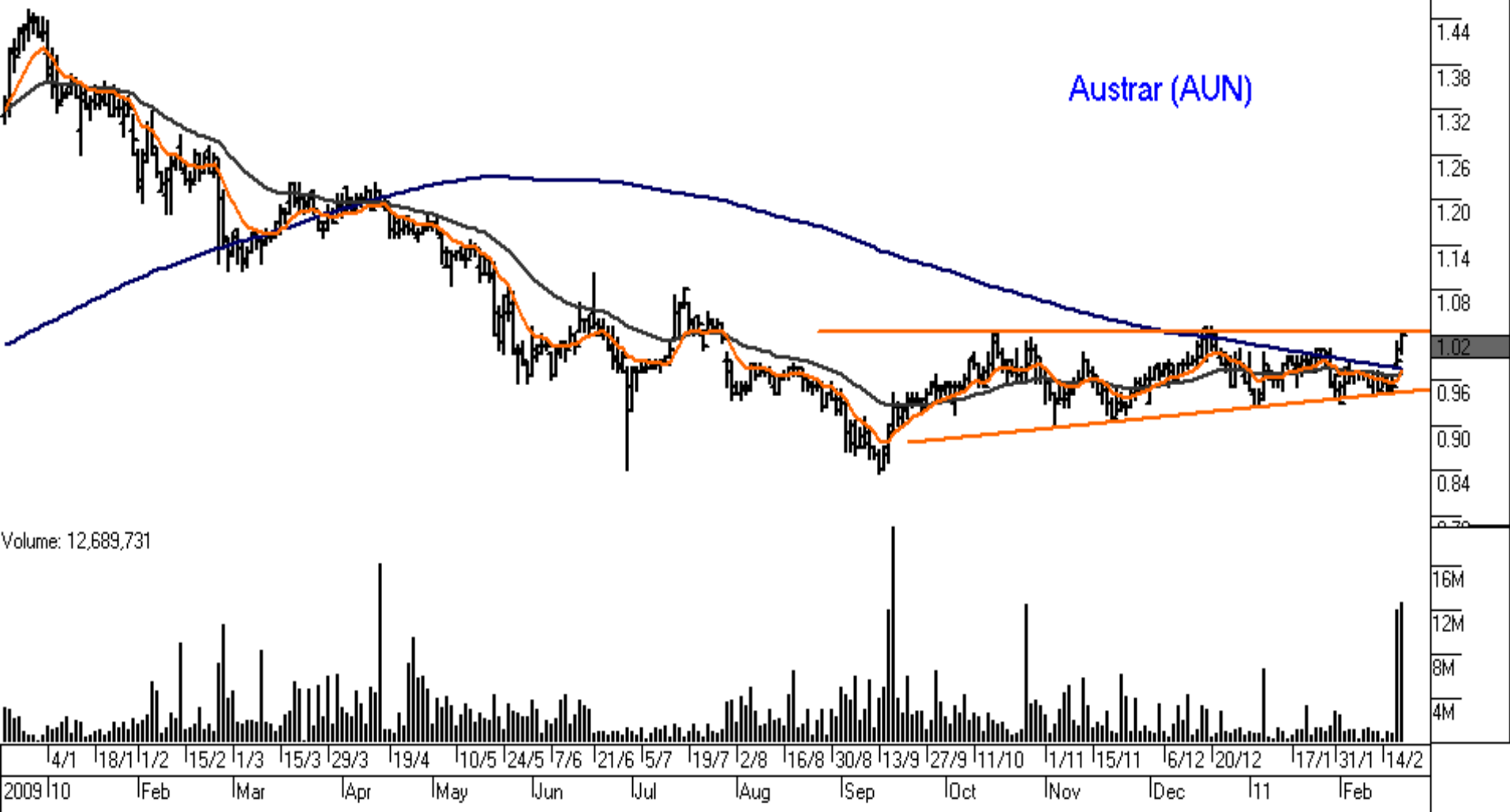
QBE INSUR. FPO (QBE.AX): 19.04 +0.000



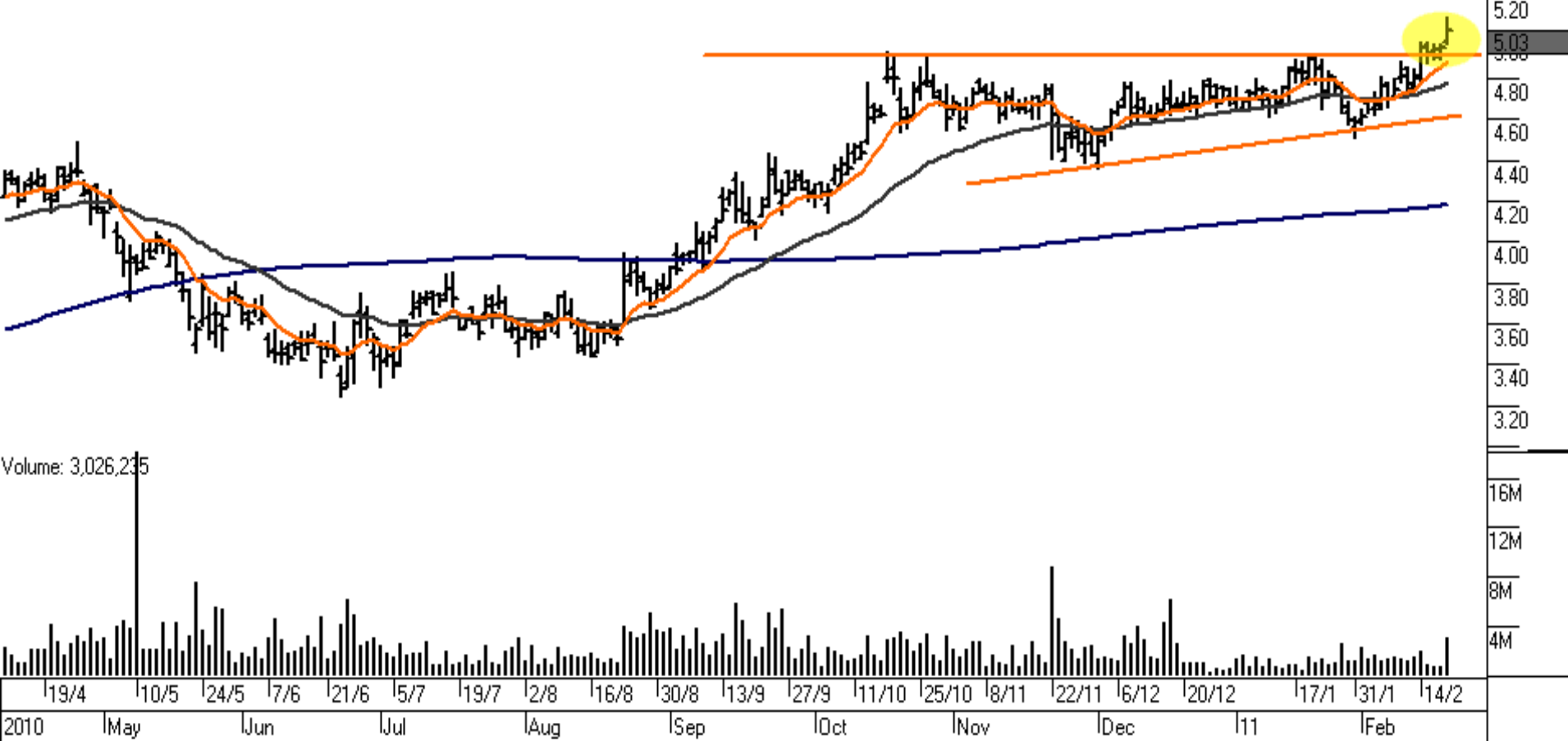
# Fortescue Metals (FMG)



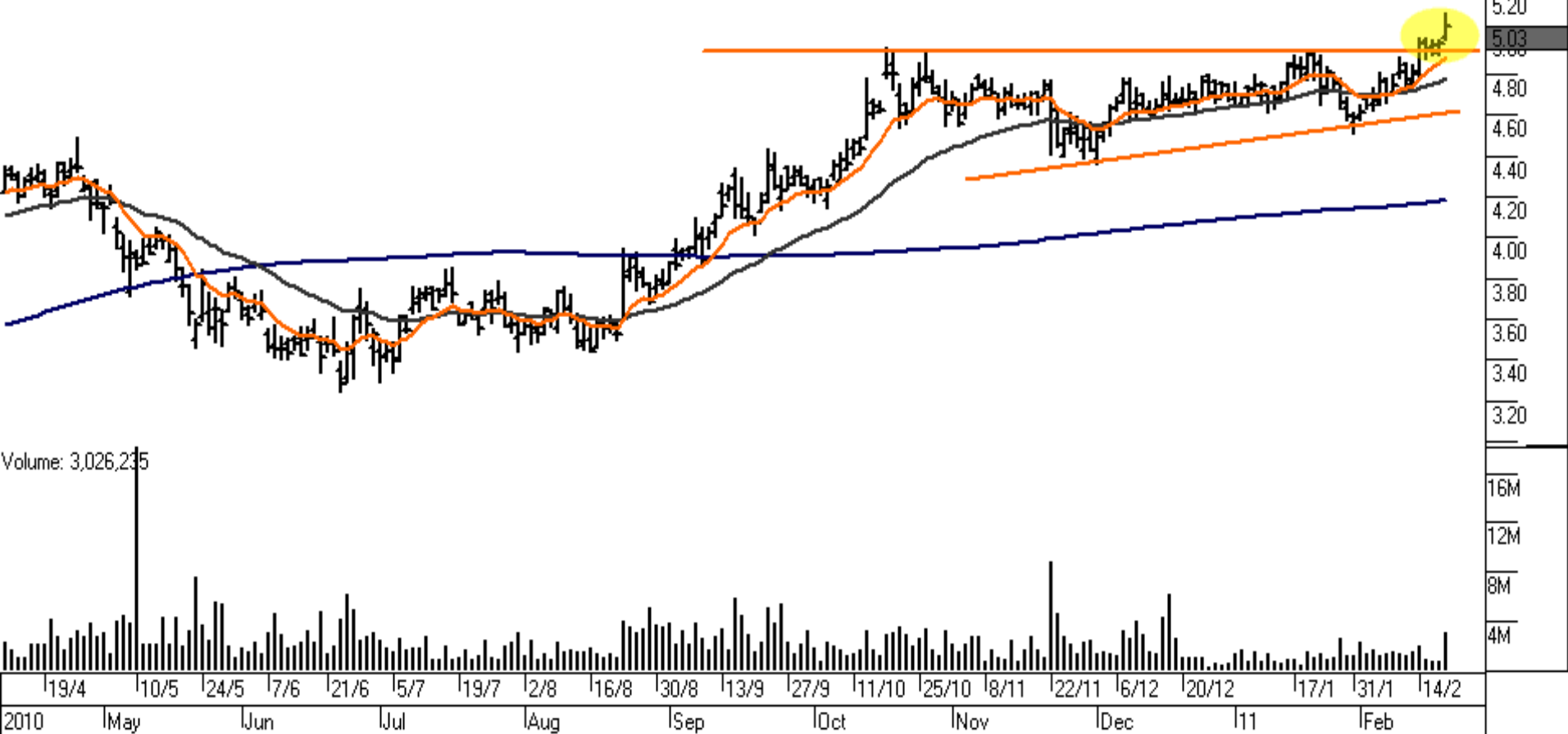
Volume: 11,874,880



# Challenger Financial (CGF)



## Challenger Financial (CGF)



# Requests.

EMAIL:

[stockwatch@finnewsnetwork.com.au](mailto:stockwatch@finnewsnetwork.com.au)

Maximum 2 requests per email.

At the time of writing this report James Gerrish does not currently hold any positions in stocks discussed in the presentation.